



Huons Medical

COMPANY PROFILE

Contents

PART I : ABOUT PANACE

- ❖ COMPANY OVERVIEW
- ❖ COMPANY GOVERNANCE
- ❖ COMPANY HISTORY
- ❖ BUSINESS PORTFOLIO
- ❖ BUSINESS ROADMAP
- ❖ GLOBAL NETWORK

PART II : AESTHETIC MEDICAL DEVICE

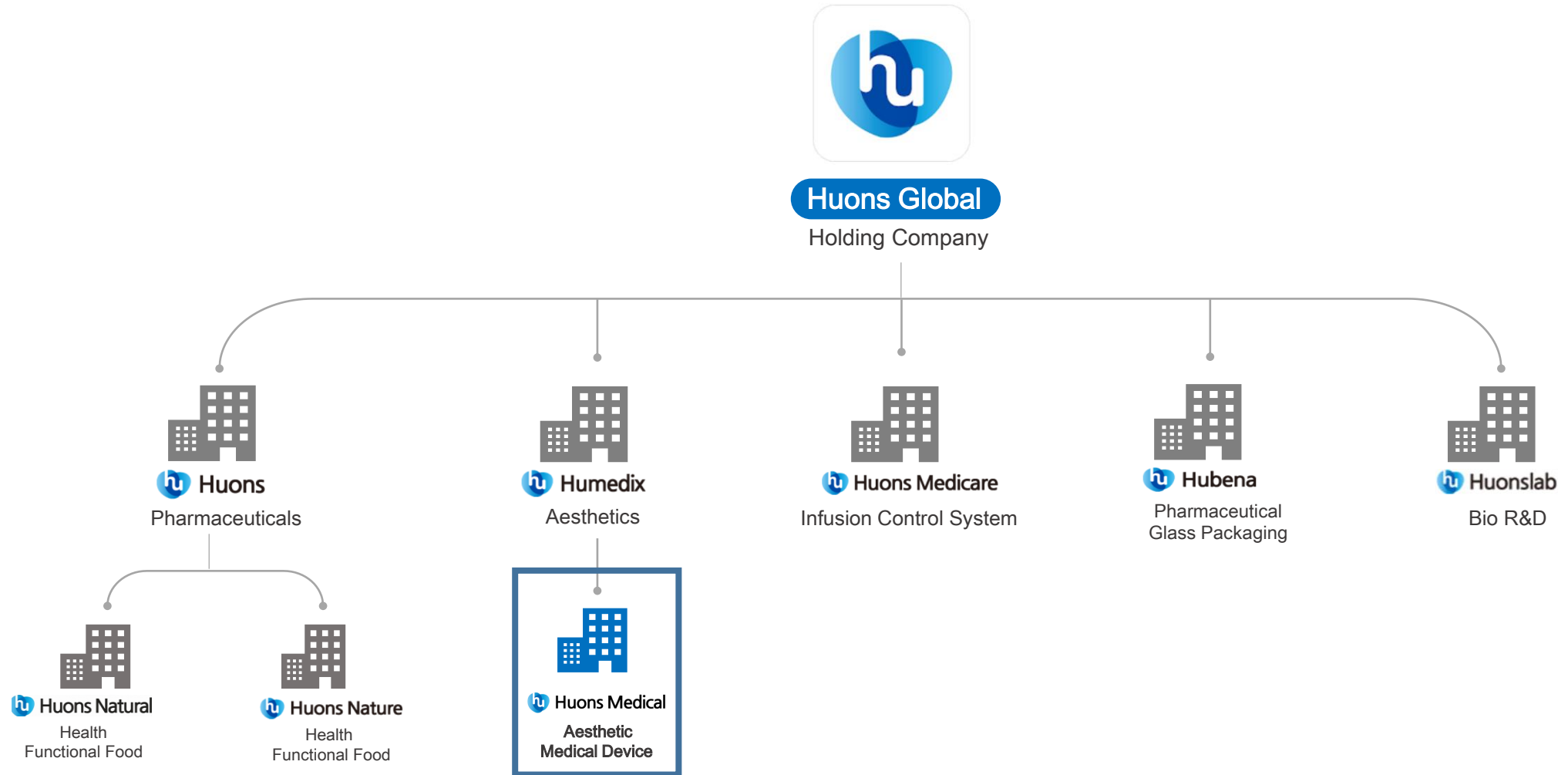
- ❖ DERMA SHINE
- ❖ DERMA AKNE
- ❖ DERMA Q-RAY
- ❖ PURE MASK
- ❖ DUOLIF

PART III : OUR PRODUCTS

- ❖ URO-EMX
- ❖ URO-EX
- ❖ IMPO88



COMPANY NAME	Huons Medical
CEO	Park, Byung Moo (D.B.A)
Incorporation Year	2013
Business Field	Aesthetic Medical device, ESWT
Main Product Line	Drug Delivery System, Multi-Needle
Annual Turnover	\$12 Million
Gross Capital	\$27 Million
Number of Employee	50
Company Address (HO)	314, Galmachi-ro, Jungwon-gu, Seongnam-si, Gyeonggi-do, Korea
1 st Factory Address	545, Dunchon-daero, Jungwon-gu, Seongnam-si, Gyeonggi-do, Korea
Website	www.panace.co.kr



- 2013



- 2003. Urontech establishment
- 2004. Launched URO-E
- 2004. KGNP certification, developed magnetic method
- 2007. Launched X-ray INVERTER way URO-EMX
- 2008. URO-EMX export to Middle East , South East Asia
- 2009. Obtained ISO13485
- 2009 Got CE 0434 mark for URO-EMX
- 2010. First domestic product (URO-EMX) export to Europe



2014 - 2015

- 2014. 09_Launched DermaShine® *Balance*
- 2014. 09_DermaShine® & 5Pin needle Cleared by CFDA
- 2015. 02_Expanded multi-needle factory

2016 - 2017



- 2017. 02_Obtained GMP for DemaAKNE® (Class III)
- 2017. 05_Launched DermaAKNE®
- 2017. 10_Got CE mark for DermaShine® *Balance*



2018 - 2019

- 2018. 01_Obtained TGA for DermaShine® *Balance*
- 2018. 05_9Pin needle (32G) Cleared by CFDA
- 2019. 01_DermaShine® *Balance* Cleared by CFDA

2020



- 2020. 04_Got CE mark for DermaAKNE
_ Brian Park(CEO) joined in Panace
- 2020. 04_Uroentech and Panace M&A
- 2020. 07_Got CE mark for DermaShine *Pro*
- 2020. 07_Launched 9Pin needle (34G)

SYRINGE INJECTOR

A Medical Device
for Skin Lifting and Rejuvenation
by injecting drugs into the dermal layer
using the Multi Needle assay

Blue IPL + Radio Frequency

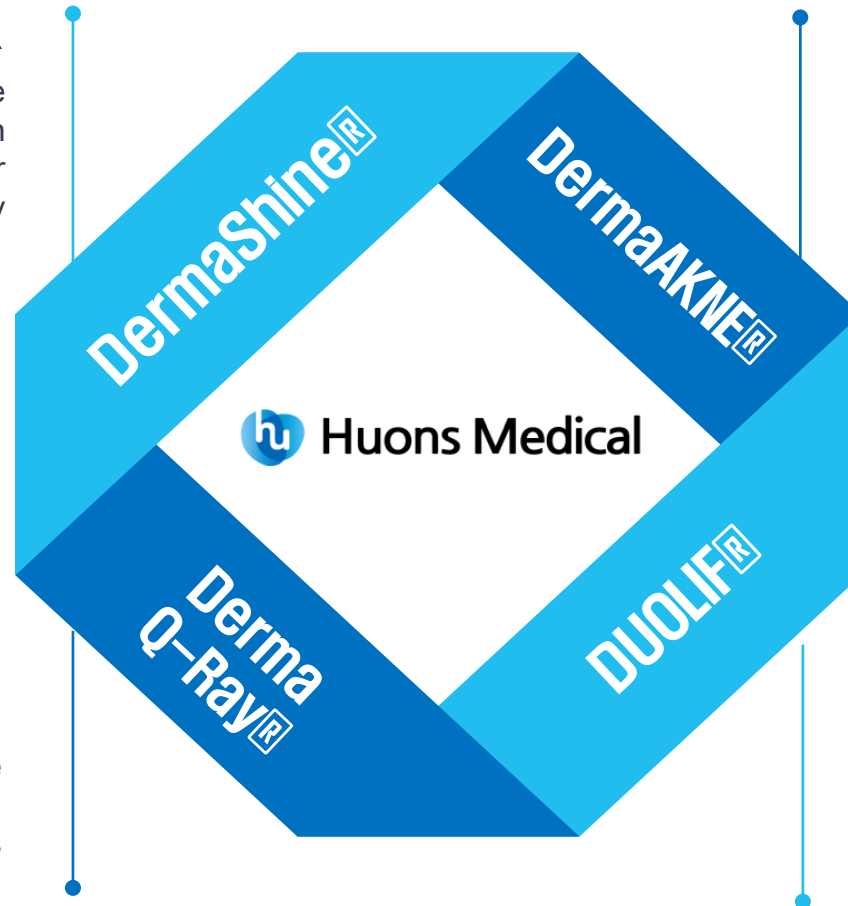
A Medical Device
capable of treating active acne vulgaris
using high intense pulsed light and RF

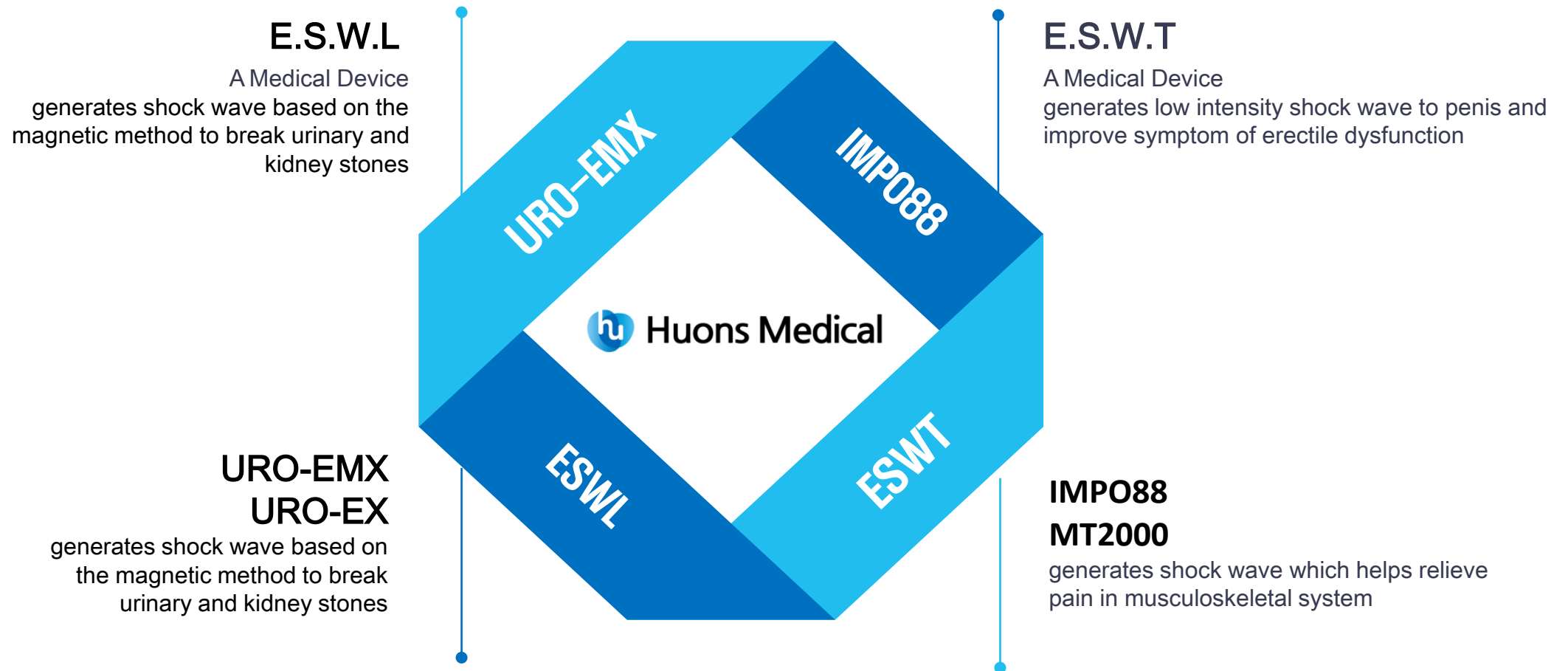
LASER

A Medical Device
for treatment of tattoo, pigmentation, pore, fine lines, etc.
with the Nd:YAG laser of which basic wavelength is
Q-switched 1064nm, including 532nm

HOME-USE DEVICE

HIFU+RF lifting device, LED Mask







PATENTS

Total Number of Patents : 17

SUBJECT	REGION	PATENT NO.
Syringe device for skin treatment	US	US9649440B2
Pressure Sensitive Automatic Injection System	China	CN104394908B
Multi needle assembly with readily adjustable structure	US	US9468748B2
Multi-needle assembly with easily adjustable needle-exposed length	China	CN104334211B
Drug injecting apparatus for use in skin surgery	China	CN103298508B
Drug injecting apparatus for use in skin surgery	EU	EP2633873B1
Module for use in skin surgery	China	CN103282077B
10 of patents for related technology	S. Korea	-



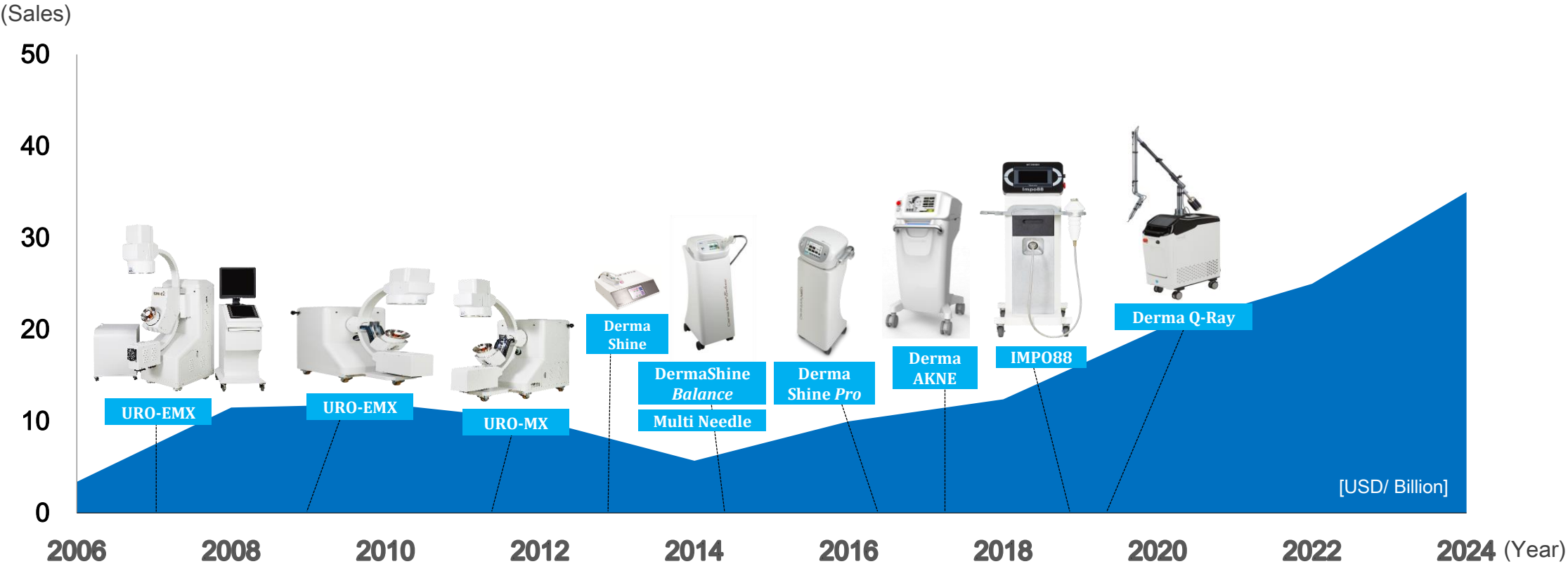
CERTIFICATES

Total Number of Certificates : 10 items, about 6 regions

NAME OF CERTIFICATES	REGION	PRODUCT
CE Mark	EU countries	<ul style="list-style-type: none"> • DermaShine Balance • DermaShine Pro • DermaAKNE for acne treatment (Medical Grade CE) • 9Pin Multi Needle_32G
CFDA	China	<ul style="list-style-type: none"> • DermaShine System • DermaShine Balance • 5Pin Multi Needle_31G/ 32G • 9Pin Multi Needle_32G
MFDS	S. Korea	<ul style="list-style-type: none"> • DermaShine Balance • DermaShine Pro • DermaAKNE • Derma Q-Ray • 5Pin Multi Needle_32G • 9Pin Multi Needle_32G/ 34G
TGA	Australia	<ul style="list-style-type: none"> • DermaShine Balance • 9Pin Multi Needle_32G
DMEC	Vietnam	<ul style="list-style-type: none"> • DermaShine Balance • 9Pin Multi Needle_32G
INVIMA	Columbia	<ul style="list-style-type: none"> • DermaShine Balance • 9Pin Multi Needle_32G
KC, CB, CQC	-	<ul style="list-style-type: none"> • Pure Mask (Aesthetic device)

❖ SUCCESS OF DERMASHINE®

After the launch of DermaShine in 2013, the sales volume and amount have increased every year, and now Panace has a strong market dominance.





EUROPE

LITHUANIA -
POLAND -
CZECH -



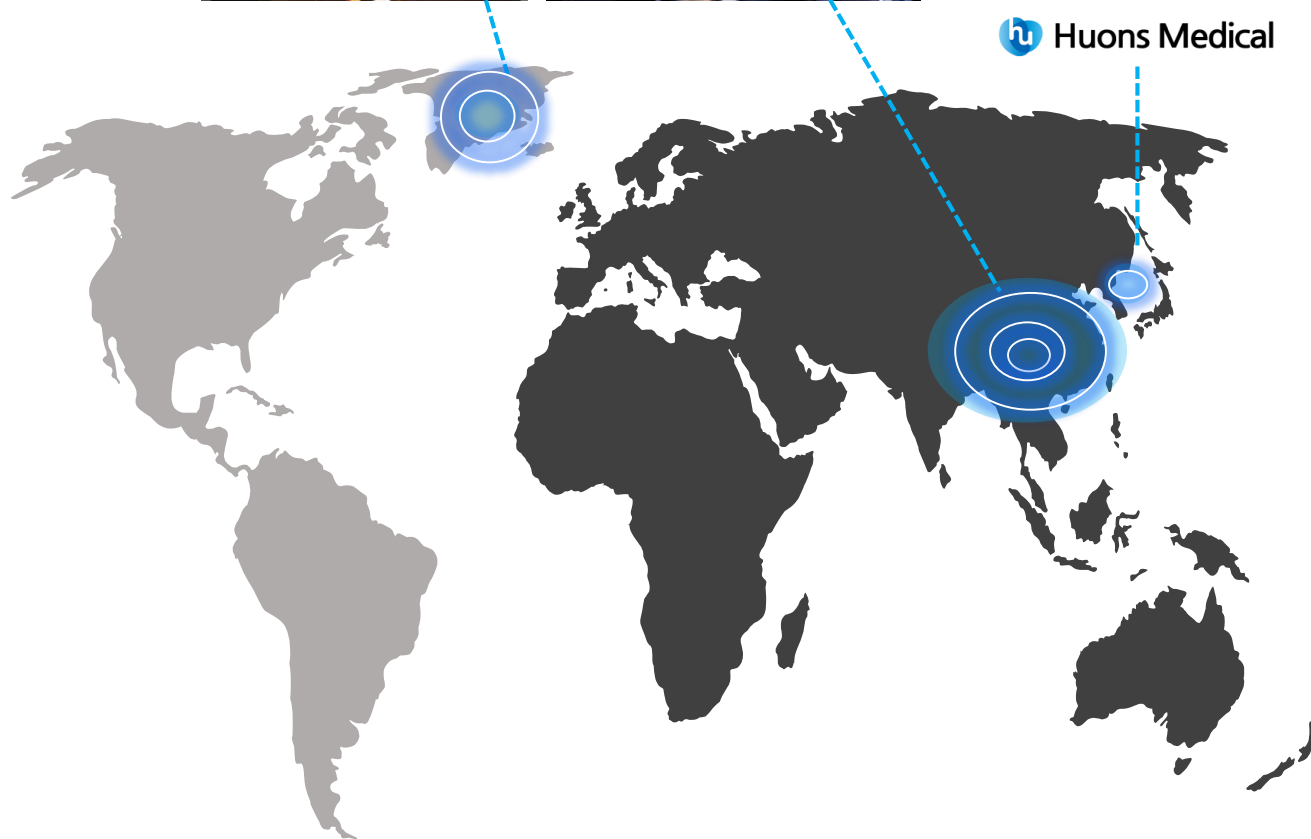
MIDDLE EAST

IRAQ -



S. AMERICA

COLUMBIA -



 **Huons Medical**



ASIA

- CHINA
- SOUTH KOREA
- INDONESIA
- VIETNAM
- THAILAND
- UZBEKISTAN
- CAMBODIA
- INDIA



OCEANIA

- AUSTRALIA

Contents

PART I : ABOUT PANACE

- ❖ COMPANY OVERVIEW
- ❖ COMPANY GOVERNANCE
- ❖ COMPANY HISTORY
- ❖ BUSINESS PORTFOLIO
- ❖ BUSINESS ROADMAP
- ❖ GLOBAL NETWORK

PART II : AESTHETIC MEDICAL DEVICE

- ❖ DERMA SHINE
- ❖ DERMA AKNE
- ❖ DERMA Q-RAY
- ❖ PURE MASK
- ❖ DUOLIF

PART III : OUR PRODUCTS

- ❖ URO-EMX
- ❖ URO-EX
- ❖ IMPO88



❖ **INTENDED USE**

- To Inject solution into human body automatically using electric drug delivery system

❖ **INDICATIONS**

- Alleviating dry skin and reducing fine line and facial wrinkles by injecting HA, skin booster and PDRN and so on subcutaneously.

❖ **SPECIFICATION**

Item	Electric Drug Infusion Pump
Model Name	Panace-DS-30
Dimension (w/o cradle)	350 * 260 * 125 mm
Weight (w/o cradle)	2.3 kg
Rating	AC100-240V 50/60Hz 90VA
Vacuum Pressure	~ 610 mmHG
Component	Syringe injector, Data cable, Power cord, Syringe holder, Footswitch, Cradle*
Certificate	MFDS, CE, CFDA, TGA, DMEC, INVIMA
Research paper	Beom Joon Kim. <i>Effects of hyaluronic acid injected using the mesogun injector with stamp-type microneedle on skin hydration.</i> DERMATOLOGIC THERAPY



* Cradle is optional

❖ INTENDED USE

- To Inject solution into human body automatically using electric drug delivery system

❖ INDICATIONS

- Alleviating dry skin and reducing fine line and facial wrinkles by injecting HA, skin booster and PDRN and so on subcutaneously.

❖ SPECIFICATION

Item	Electric Drug Infusion Pump
Model Name	Panace-DS-51
Dimension (w/o cradle)	379 * 328 * 178 mm
Weight (w/o cradle)	3.4 kg
Rating	AC100-240V 50/60Hz, 90VA
Component	Syringe injector, Adapter, User manual, AC power cord, Footswitch, Cradle*
Certificate	MFDS, CE

❖ Multi Needle for DermaShine



[5Pin 31G Multi Needle]



[9Pin 32G Multi Needle]



[9Pin 34G Multi Needle]

❖ INTENDED USE

- Sterile needles used for the drug injection

❖ SPECIFICATION

Item	Multi Needle (Disposable)
Model Name	5Pin 31G Multi Needle : MT-NDL5P31G1 9Pin 32G Multi Needle : PA-NDL9P32G1 9Pin 34G Multi Needle : PA-NDL9P34G1
Self Life	36 Month
Type	5pin, 9pin
Size	31G, 32G, 34G
Package	5Pin : 30 EA/ Box 9Pin : 21 EA/ Box
Function	Adjustable the length of needle
Certificate	MFDS, CE, CFDA, TGA, DMEC, INVIMA



* Cradle is optional

❖ INTENDED USE

- To cure acne with IPL (intense Pulsed Light) and Radio Frequency

❖ INDICATIONS

- Curing the dermatosis with IPL as Pulse waves
- Coagulation the tissue with high-frequency current
- Relieving pain by delivering high frequency into the body

❖ SPECIFICATION

Item	RF + IPL
Model Name	DermaAKNE
Dimension (w/o cradle)	442 * 557 * 247 mm
Weight (w/o cradle)	35 kg
Device Mode	General electrosurgical device High Frequency treatment device Intense pulsed light device
Rating	AC 230V / 50Hz
Component	Main body, Electrode, Hand piece tips Foot switch, Power cable, Goggle, Cradle
Certificate	MFDA, CE
Research paper	Beom Joon Kim. <i>Effects of Intradermal Radiofrequency Treatment and Intense Pulsed Light Therapy in an Acne-induced Rabbit Ear Model.</i> SCIENTIFIC REPORTS



❖ **INTENDED USE**

- To improve skin tone and pigmentation overall with Nd:YAG laser

❖ **INDICATIONS**

- Promoting skin regeneration and improving overall skin tone and texture
- Lightening acne scar and helping wrinkle care

❖ **SPECIFICATION**

Item	Nd:YAG Q-Switched LASER
Model Name	Derma Qray
Dimension	320 * 647 * 685 mm
Weight	60 kg
Wavelength	1064 nm & 532 nm
Maximum Energy	Free Running Mode : 2,000 mJ 1064 nm : 1,200 mJ PTP 1064 nm : 1,600mJ 532 nm : 500 mJ PTP 532 nm : 600 mJ
Reception Rate	Max 10 Hz
Spot Size	2 - 10 mm (1 mm step)
Fractional HP (optional)	DOE
Component	Main body, Hand piece (Collimation, Fractional, 585 nm Dye, 650 Dye), Arm, Foot switch, Goggle
Certificate	MFDS



[Reverse]



[Controller]

❖ INDICATIONS

- Brightening skin tone and texture

❖ SPECIFICATION

Item	LED Mask
Model Name	LEDGEN-LED MASK-1
Dimension	234 * 183 * 6.5 mm
LED	Red, Yellow, Green, IR (4 in 1 chip) 86 ea 3 mode complex light (LED: 344 ea) IR + Red, IR + Yellow, IR + Green
Lens	Lens Array : 3 x 3, 5 x 5 Lens Diameter : 19 mm
Power	Battery : USB rechargeable
Component	Mask, Controller, Cradle, User manual, Pouch, Soft cloth, Adapter, USB cable, Silicon ear band
Certificate	CE, KC, CB, CQC

 Bluetooth™



HIFU



MULTI-POLAR

❖ INDICATIONS

- lifting brow, cheek, neck and chin skin
- Reducing wrinkles in the corner of mouth

❖ SPECIFICATION

Item	HIFU + RF Home Device
Model Name	HIN-7MB
Dimension	50 * 60 * 205 mm
HIFU	Frequency : 7 MHz $\pm 10\%$ Focus distance : 3.0 mm $\pm 10\%$ Life span of cartridge : 60,000 shot
RF	Frequency : 7 MHz $\pm 10\%$ Type : Bipolar, RET Output : 1 ~4 W $\pm 20\%$
Power	Adapter 100-240V, 50/60 Hz
Component	Main body, Wireless charging cradle, Adapter
Certificate	CE, KC, PSE/TELEC

Contents

PART I : ABOUT PANACE

- ❖ COMPANY OVERVIEW
- ❖ COMPANY GOVERNANCE
- ❖ COMPANY HISTORY
- ❖ BUSINESS PORTFOLIO
- ❖ BUSINESS ROADMAP
- ❖ GLOBAL NETWORK

PART II : AESTHETIC MEDICAL DEVICE

- ❖ DERMA SHINE
- ❖ DERMA AKNE
- ❖ DERMA Q-RAY
- ❖ PURE MASK
- ❖ DUOLIF

PART III : OUR PRODUCTS

- ❖ URO-EMX
- ❖ URO-EX
- ❖ IMPO88



[Movable treatment head]

❖ INTENDED USE

- Generate shock wave based on the cylinder coil and magnetic gap method to break urinary and kidney stones

❖ INDICATIONS

- Sophisticated shape reflector makes high accuracy focus operating site
- Movable treatment head gives satisfying result regardless of patient's body type

❖ SPECIFICAITON

Item	E.S.W.L
Model Name	URO - EMX
Dimension	2000 * 1410 * 1800 mm
Weight	320 KG
Rated Power	3.5kW / 220VAC / 60Hz
Component	C-arm, Controller, Generator, Ultrasound Localization(option), Bed
X-ray	Inverter Generator



❖ **INTENDED USE**

- Generates shock wave based on the cylinder coil and magnetic gap method to break the urinary and kidney stones

❖ **INDICATIONS**

- The magnetic generator minimizes the damage and noise and increase the smashing rate drastically

❖ **SPECIFICATION**

Item	E.S.W.L
Model Name	URO - EX
Dimension	2000 * 1410 * 1800 mm
Weight	320 KG
Rated Power	3.5kW / 220VAC / 60Hz
Component	C-arm, Controller, Generator, Ultrasound Localization(option), Bed
X-ray	Inverter Generator



❖ INTENDED USE

- Transmits low-intensity shock wave to penis and trigger neovascularization, which helps improve blood flow in penis to help with firmness, and increase the duration

❖ INDICATION

- Maximum treatment result without side-effects, which leave no scars as it is non-invasive treatment

❖ SPECIFICATION

Item	E.S.W.T
Model Name	IMPO 88
Dimension	450 * 600 * 1150 mm
Weight	45 kg
Rating	220VAC , 60Hz, 1kW
Clinical Trial	The Catholic Univ of Korea Seoul ST. Marry's Hospital Korea University Medicine
Clinical Study Report	2019.01.10 Prof. Se Ung Kim_Low-intensity Shock Wave Therapy for Erectile Dysfunction; Bi-center sham controlled, double blind, randomized prospective study

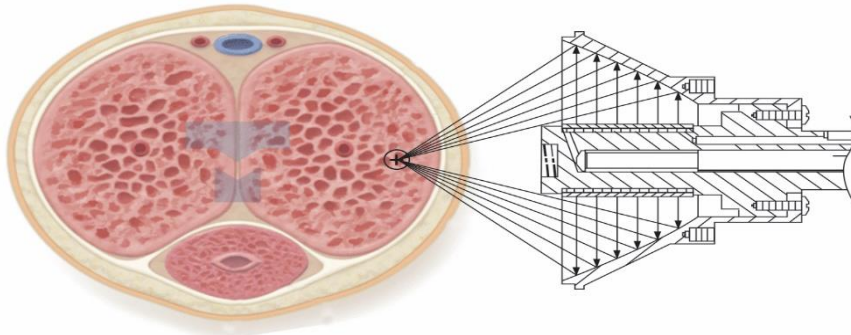


고려대학교의료원
KOREA UNIVERSITY MEDICINE



가톨릭대학교
서울성모병원

Korea's first and only clinical trial
proven erectile dysfunction treatment
device



Transmits Low-Intensity Shock Wave



Appearance

Thank you